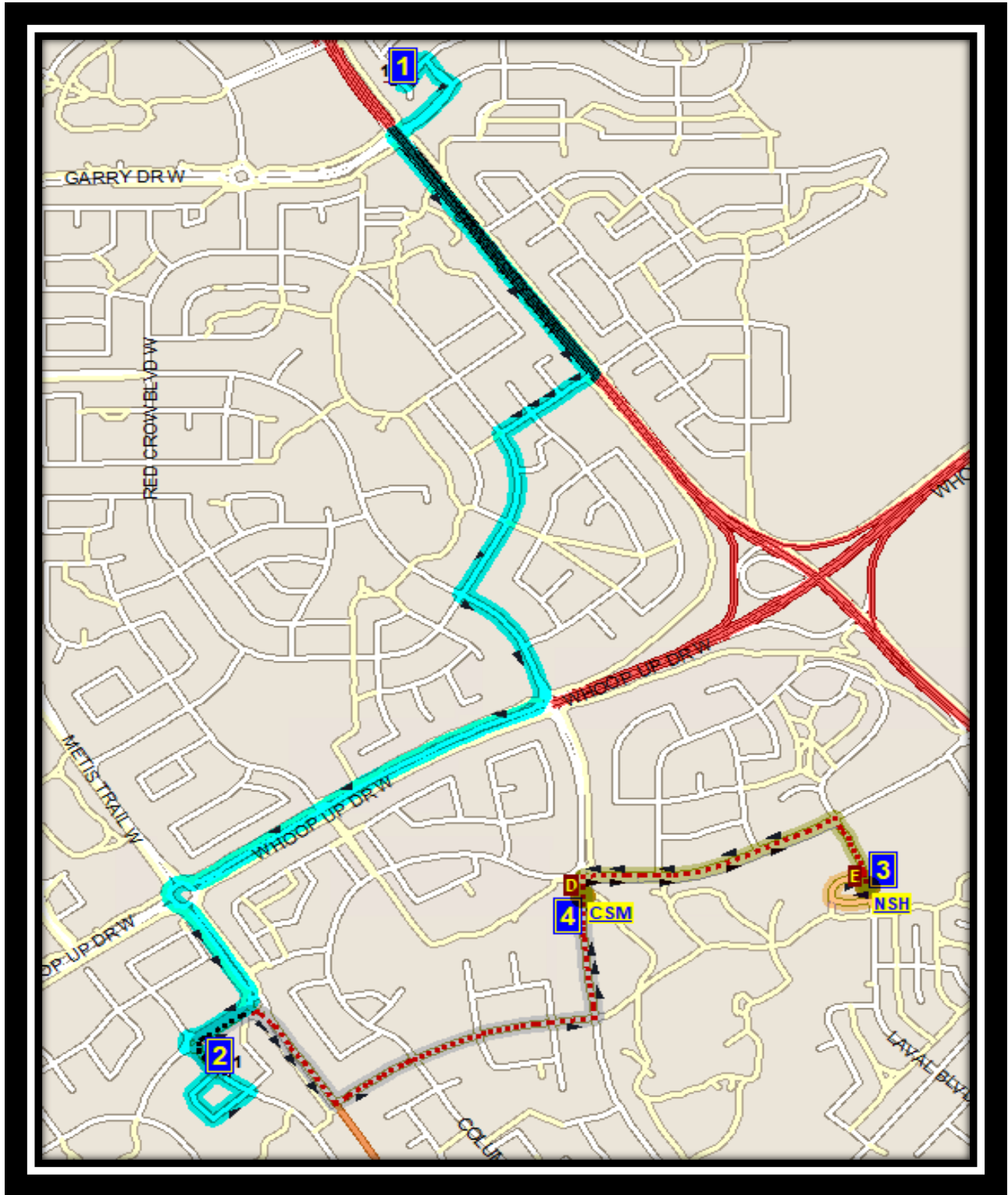


CLN St. Martha/Nicholas Sheran

REVISED: May 25, 2021

EFFECTIVE: May 25, 2021



AM Route

The Children of St. Martha – 206 McMaster Blvd W – (403) 381-8110
Nicholas Sheran Community School – 380 Laval Blvd W – (403) 381-1244

Please arrive 5 minutes before scheduled pick up and drop off times. Times shown may vary due to weather & traffic conditions.
Bus routes and maps are subject to change. For the most up-to-date version, visit www.southland.ca/lethbridge.



CLN St. Martha/Nicholas Sheran

REVISED: May 25, 2021

EFFECTIVE: May 25, 2021

Route:CLNMNS A CLN Martha/NickSher Start Time:8:09 am
End Time:8:38 am

Route Days:MTWHF

- (1) 8:09 am 315 HERITAGE CRES W
- (2) 8:17 am 23 FIRELIGHT WAY W
Wheelchair
- (3) 8:28 am NICKOLAS SHERAN SCHOOL
- (4) 8:38 am ST MARTHA

Route:CLNMNS P CLN StMartha/NickSh Start Time:3:29 pm
End Time:3:58 pm

Route Days:MTWH

- (1) 3:29 pm ST MARTHA
- (2) 3:32 pm NICKOLAS SHERAN SCHOOL
- (3) 3:44 pm 23 FIRELIGHT WAY W
Wheelchair
- (4) 3:57 pm 315 HERITAGE CRES W

Route:CLN NS F CLN StMarthaNickSher Start Time:11:35 am
End Time:11:40 am

Route Days:F

- (1) 11:35 am NICKOLAS SHERAN SCHOOL
- (2) 11:40 am 23 FIRELIGHT WAY W
Wheelchair
- (1) 1:17 pm ST MARTHA
- (2) 1:23 pm 315 HERITAGE CRES W

The Children of St. Martha – 206 McMaster Blvd W – (403) 381-8110

Nicholas Sheran Community School – 380 Laval Blvd W – (403) 381-1244

Please arrive 5 minutes before scheduled pick up and drop off times. Times shown may vary due to weather & traffic conditions.

Bus routes and maps are subject to change. For the most up-to-date version, visit www.southland.ca/lethbridge.